



**Robot/CHECKUP<sup>®</sup>**  
System i5 Automation Evaluation

# Robot/CHECKUP:

## An Evaluation Of Your System i5 Automation Health



**Y**ou know that automating operations and processes increases the reliability, efficiency, and cost-effectiveness of your IBM® System i5™. You also know that with automated operations you can save time and money, while getting more work done with fewer errors. But, what you may not know is the current state of your automation health—just how fit are your System i5 operations today? Are you efficiently automated? How well is your current level of automation working? These questions continue to plague System i5 shops of every size.

Help/Systems, Inc., the world's leader in System i5 operations automation, has the answer—Robot/CHECKUP, our System i5

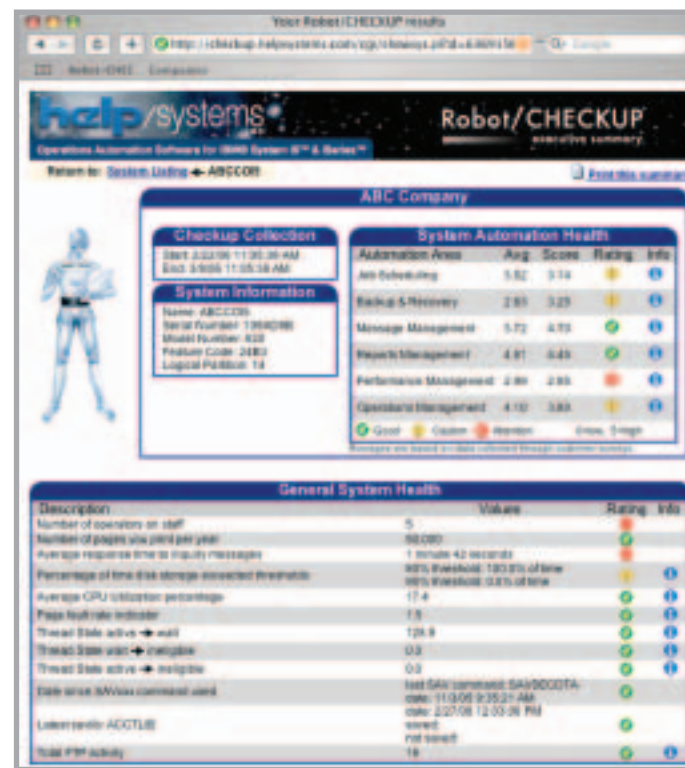
automation evaluation service. Think of Robot/CHECKUP as your System i5 operations physical. Just as you have regular physical exams to monitor your health, you can use Robot/CHECKUP regularly to evaluate the automation health of your System i5.

### Robot/CHECKUP Examines Your System i5 Automation Health

Robot/CHECKUP looks at six major areas of automation—job scheduling, message management, backup and recovery, report management, performance management, and operations management—to show you exactly where you are with System i5 automation. As a result, you understand your current automation level and you learn what you need to do to make your System i5 operations as efficient and worry-free as possible.

When you run Robot/CHECKUP, it collects current data for analysis to keep you up-to-date on which areas of your System i5 should be automated for maximum efficiency and savings.

### The Executive Summary Shows You Exactly Where You Stand



The Executive Summary evaluates your automation health and your system health.

After Robot/CHECKUP collects the data, Help/Systems analyzes it to create the Robot/CHECKUP Executive Summary. This summary is a snapshot of your System i5 automation health and your general system health.

The *System Automation Health* section of the summary shows you exactly where you stand in the six major areas of System i5 automation. You see the industry average score for each area of automation (based on recent surveys), your score (based on the analysis of your data), and your automation rating (a comparison of the two).

The *General System Health* section of the summary rates your System i5 operations health in other major areas, such as pages printed, disk space used, processor activity, and FTP actions. Active links to online graphs provide the details you need to complete the picture.

### Automation Ratings Provide A Clear Picture Of Your Automation Health



Each automation area has a Summary section that explains your automation rating for that area.

In the System Automation Health section of the Executive Summary, you can click on an Info link for each of the six automation areas. The Info link opens a Summary section that displays your rating and score, and explains your automation rating for that area.

### Use The Results To Make The Most Of Your Help/Systems Products

A common question for all Help/Systems customers is whether they're getting everything they can from their Robot products. Robot/CHECKUP can help answer that question by clarifying which advanced features you could—or should—be using. Maybe reactive job scheduling can help you streamline your job schedule. Or, perhaps OPerator Assistance Language® (OPAL®) code is the key to automating your report management process. Robot/CHECKUP helps reveal how you can use your Help/Systems products for the maximum benefit to you.

### Reap Your Automation Benefits

Robot/CHECKUP helps clarify your automation potential. When you realize that potential, the benefits can be enormous. For example, you can:

- Increase the productivity and efficiency of your IT department, while reducing costs and freeing your operators for other tasks.
- Save time and money, and satisfy Sarbanes-Oxley (SOX) auditors by efficiently automating System i5 processes such as report management or system backups.

- Improve the reliability of your System i5 while reducing the amount of time needed to monitor and maintain it.
- Maximize the return on investment (ROI) for all your Help/Systems products.

You get a clear picture of your automation strengths, your automation problem areas, and what to change for maximum benefit.

### Put Robot/CHECKUP To Work...

Remember, Robot/CHECKUP is easy to use. Just call us at **1-800-328-1000** and talk to your Regional Sales Manager about Robot/CHECKUP.

### ...As Simple As 1-2-3-4

After you install Robot/CHECKUP, just follow these 4 steps:

1. Start Robot/CHECKUP to collect your data, while you complete an online questionnaire.
2. Send the data and online questionnaire to Help/Systems. We analyze the information, create your personalized Executive Summary, and send you the results.
3. Review the results. A Help/Systems consultant can discuss them with you over the phone.
4. Implement your automation changes. Help/Systems can help you with implementation and training for automated operations.

### Use Robot/CHECKUP To Energize Your System i5 Automation

Robot/CHECKUP is Help/Systems' gift to you to help you determine your best automation level. We're confident that after you use Robot/CHECKUP, you'll be pleased with the results, especially if you thought automation (or more automation) was impossible.

- You'll learn about System i5 automation possibilities.
- You'll see where your greatest automation potential exists and how to achieve it.
- You'll understand how System i5 automation can really save you time, money, and effort.
- You'll see how you compare with the rest of the industry.

With over 24 years of experience at automating more than 15,000 customers around the world, Help/Systems can help you get your System i5 automation healthy and keep it that way.

# Robot/CHECKUP Safeguards Your System i5 Automation Health

## Award-Winning Robot Automated Operations Solution

Whether you have a single System i5, or a network of them, Help/Systems is committed to providing you with products that automate their operation. The products of the Robot Automated Operations Solution look and act the same. All Help/Systems products talk to each other through the solution's common component interface. This integration makes them powerful, yet easy to learn and use.

Our product expertise has won us many awards from numerous publications. And, our customers have awarded us over 55,000 times with product purchases.

## A Complete Solution Set For Each Automation Area

The products of the Robot Automated Operations Solution from Help/Systems provide a complete solution for each automation area that Robot/CHECKUP analyzes. Combine the Robot products to solve your automation problems, speed up processing, save money, reduce errors, satisfy SOX auditors, and enjoy all the benefits of robust System i5 automation health.

**Automate Job Scheduling**—Use Robot/SCHEDULE® with Robot/NETWORK® to schedule jobs on your network servers (or partitions) from a single workstation. Add Robot/CLIENT® to integrate Windows, UNIX, and Linux tasks with System i5 procedures, and make Enterprise Scheduling a reality. Use Robot/REPLAY® to submit interactive input automatically, and add Robot/ALERT® to send text, pager, or e-mail messages when important jobs finish or fail.

**Automate Message Management**—Use Robot/CONSOLE® to automate message, resource, and log management by responding to messages and running procedures. Add Robot/NETWORK to escalate messages across systems; Robot/ALERT for automatic notification; and Robot/TRAPPER® to monitor devices.

**Automate Backup and Recovery**—Combine a Robot/SAVE® backup set, a Robot/SCHEDULE job, and Robot/ALERT to handle your backup processes automatically, including unattended restricted state saves. Schedule your backups to run with Robot/SCHEDULE, and use Robot/ALERT to notify you if a problem occurs.

**Automate Report Management**—Use Robot/REPORTS® to burst reports into targeted report segments and distribute them, using Robot/ALERT or Robot/CLIENT, anywhere in the world. Add Robot/TRANSFORM® to convert reports to enhanced PDF output, while preserving embedded graphics, such as barcodes and logos.

**Automate Performance Management**—Use Robot/AUTOTUNE® to adjust pools, priorities, and time slices, collect statistics that you can graph, and send alerts when events exceed thresholds. Add Robot/NETWORK to manage performance across a network and Robot/SCHEDULE to schedule performance-tuning tasks automatically.

## Team Robot/CHECKUP With Our Educational And Consulting Services

Whether you need training or help implementing an automation project, Help/Systems Educational and Consulting Services are the answer to your needs. We offer a complete range of options for personalized training, implementation, or consultation, either at your site or online. Our skilled trainers can work with you to implement automation solutions using the Robot products. For more detailed information and class schedules, call **1-800-328-1000** and ask for the Services Coordinator, or visit our Web site at **[www.helpsystems.com/education](http://www.helpsystems.com/education)**.

## Commitment To Excellence

In 1992, Help/Systems became America's first ISO 9001-certified software company and has maintained this standard of quality ever since. This international quality standard covers software design, development, marketing, product support, and training. Help/Systems has an excellent software quality assurance system in place, full management commitment to quality, and a well-trained and motivated staff. The certification applies to all company procedures for ensuring customer satisfaction—from those done by the receptionist to the duties of the president.



**help/systems**<sup>INC.</sup>

*World's Leader in System i5  
Automated Operations*

6533 Flying Cloud Dr., Suite 200  
Eden Prairie, MN 55344  
Phone 952/933-0609  
Fax 952/933-8153  
[www.helpsystems.com](http://www.helpsystems.com)



*America's First ISO 9001  
Software Company.*